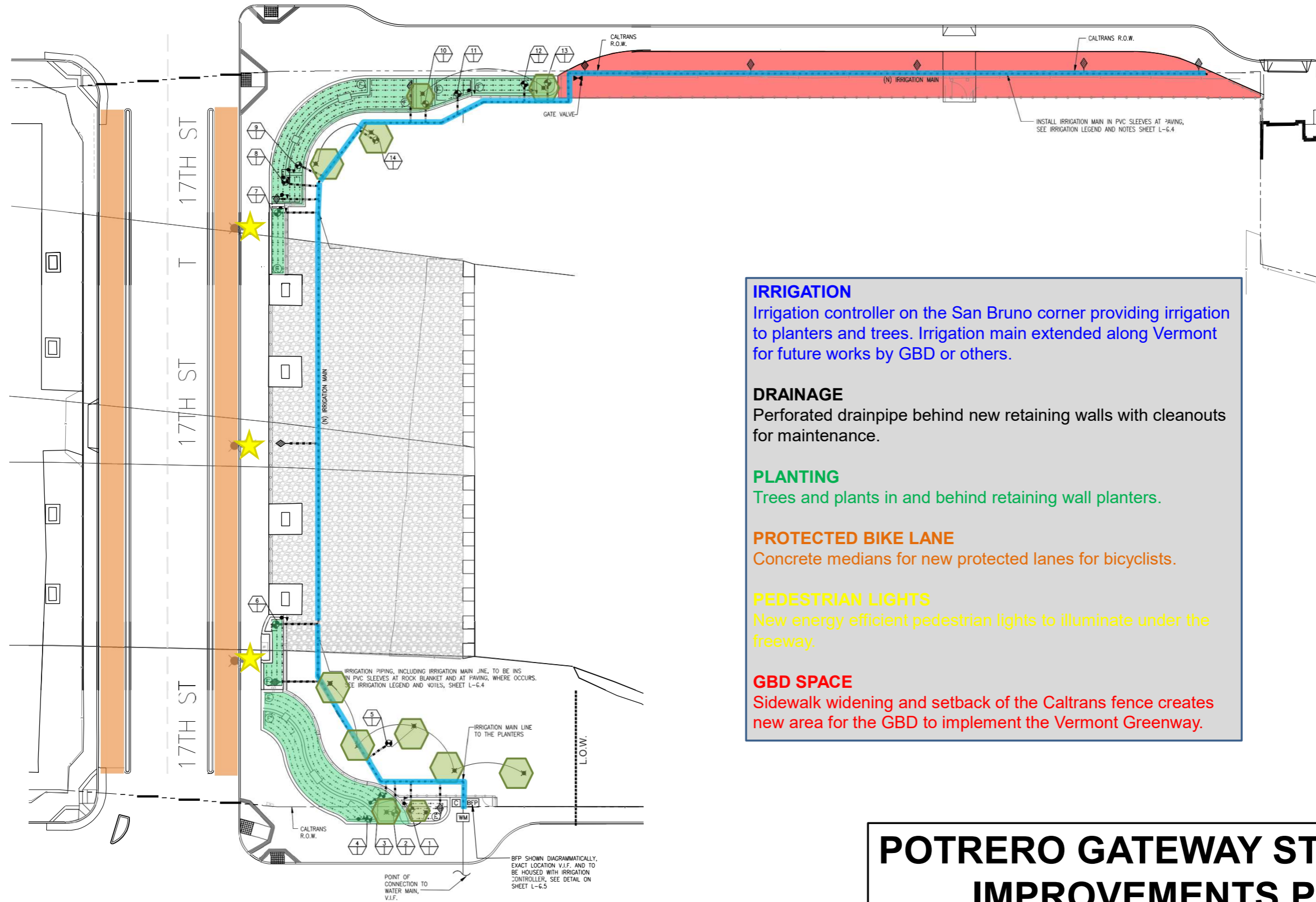


VERMONT ST.



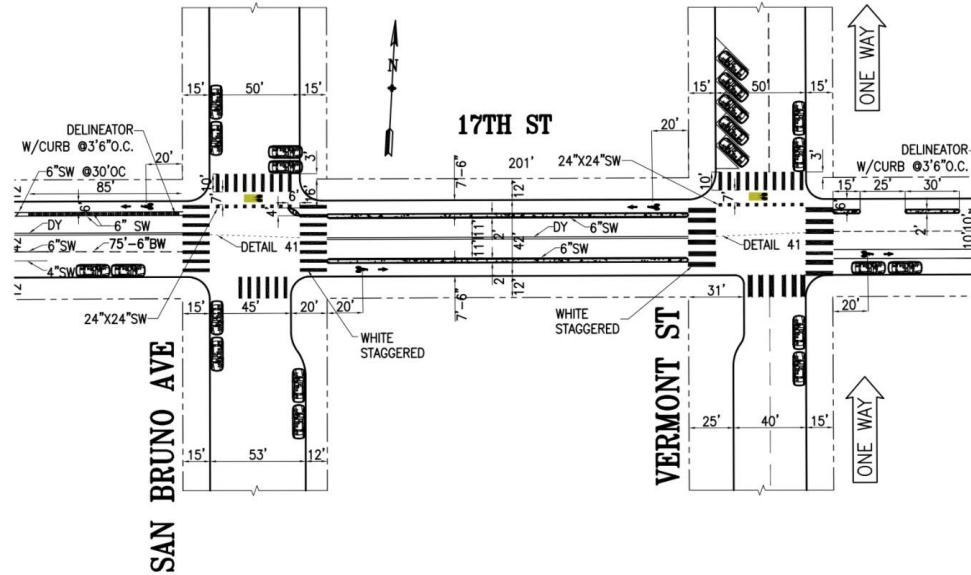
- IRRIGATION**
Irrigation controller on the San Bruno corner providing irrigation to planters and trees. Irrigation main extended along Vermont for future works by GBD or others.
- DRAINAGE**
Perforated drainpipe behind new retaining walls with cleanouts for maintenance.
- PLANTING**
Trees and plants in and behind retaining wall planters.
- PROTECTED BIKE LANE**
Concrete medians for new protected lanes for bicyclists.
- PEDESTRIAN LIGHTS**
New energy efficient pedestrian lights to illuminate under the freeway.
- GBD SPACE**
Sidewalk widening and setback of the Caltrans fence creates new area for the GBD to implement the Vermont Greenway.

POTRERO GATEWAY STREETSCAPE IMPROVEMENTS PROJECT





PROPOSED DESIGN - ZOOMED IN



Parking removed on 17th

Diagonal parking on Vermont 300 block

New bike medians

Bike safety features added



17th Street

BIKE
LANE
6'

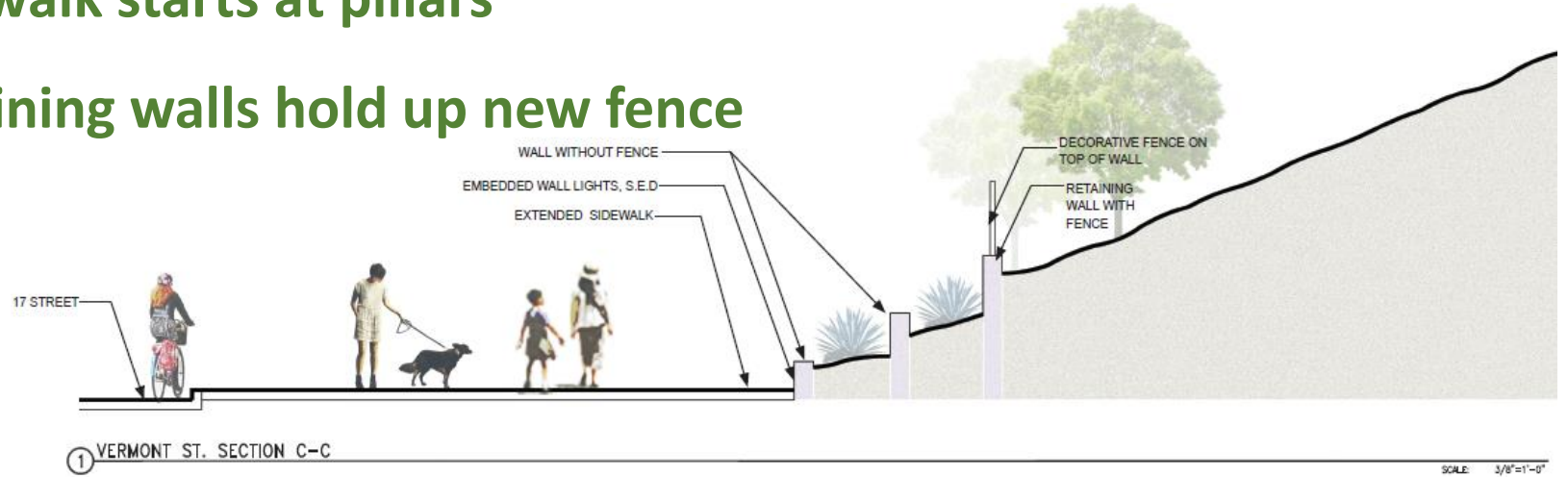
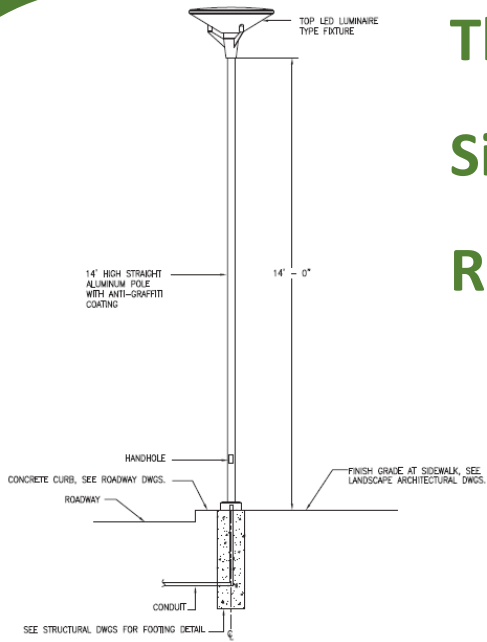
BIKE
LANE
6'

SIDEWALK
9'

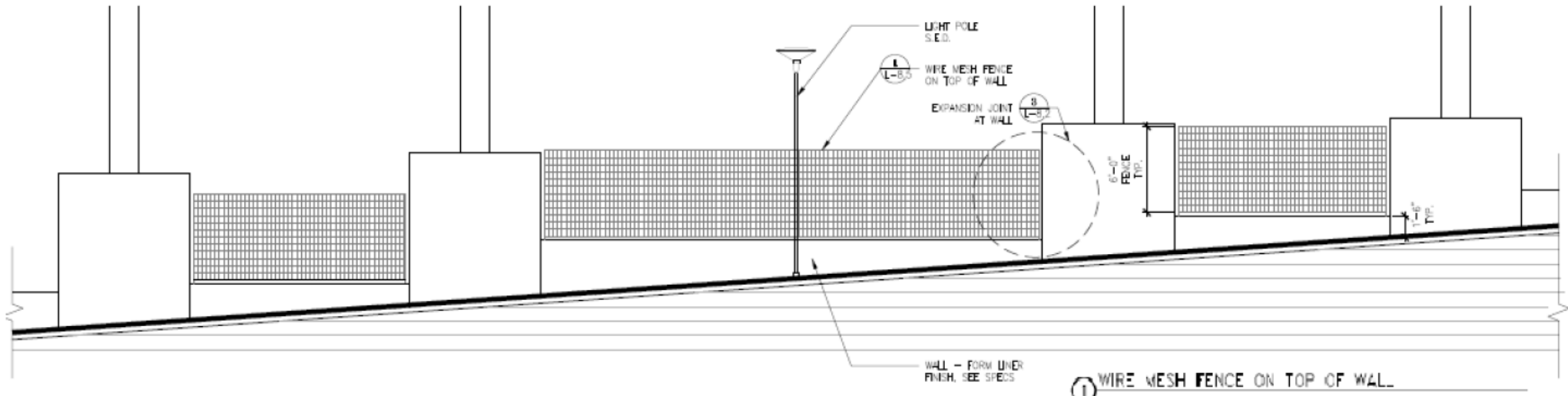
Three New Sidewalk Lights

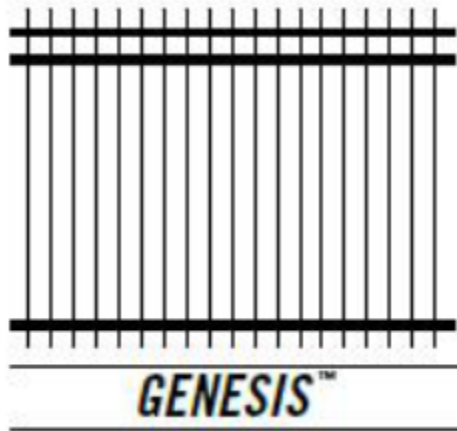
Sidewalk starts at pillars

Retaining walls hold up new fence



Wire Mesh Panel Fence from the Public Works 95% Design





Metal Fencing

Rock Blanket under freeway

Caltrans Bridge Paint Project

CA Native Habitat behind walls

